



# Guard





# Guard

Guard is a nice and luxurious high-quality fabric, woven on a dobby loom and part of the Textafoam Performance Collection.

This collection only consists of fabrics that meet the highest standards in durability and maintenance, making them long lasting, easy to clean and suitable for almost every type of upholstery.

Stains have hardly any chance and can easily be taken away with nothing more than a damp cloth. No wonder this article meets all requirements of our specialty Easy Clean Collection; [www.picobello-fabrics.com](http://www.picobello-fabrics.com).

This luxurious fine woven textile meets every style and is suitable for fitted and loose fitting upholstery. The chenille provides an extra soft handfeel and it has a full and rich appearance.

Please kindly note that due to these chenille yarns, shading and sitting mirror (seat depression) will appear, this can be minimized by brushing the fabric regularly or vacuum clean (low power) with an upholstery nozzle with and against the pile. This is a property of these kind of qualities and has no influence on the durability of this fabric.

Guard can be washed at 30 degrees (machine).

- We recommend to wash the cover inside out and immediately place the cover back to the piece of furniture, slightly damp, after washing.

***Textafoam originals** Established in 1970, this Dutch family business brings together craftsmen in textiles and furniture design to build an unrivalled portfolio in upholstery fabrics that meets buyer's needs every time. Featuring a wide colour range, ultimate value for money and excellent reliability in the supply chain.*

## Composition

/ faceside 100%PES  
/ backside n/a  
/ chenille flatweave

## Suitable for

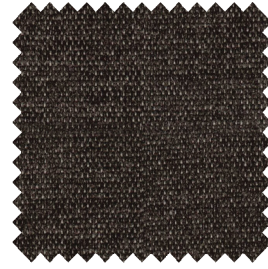
sofa's, beds, chairs with fitted and loose fitting upholstery



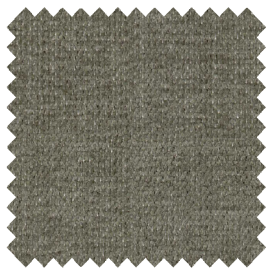
beige 05



brown 15



darkbrown 18



eucalyptus 193



forest 162



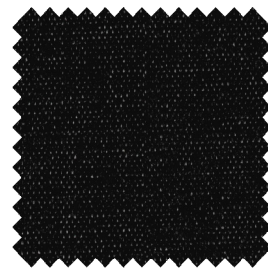
graphite 66



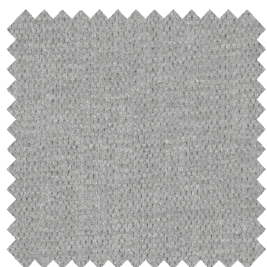
hazel 96



indigo 90



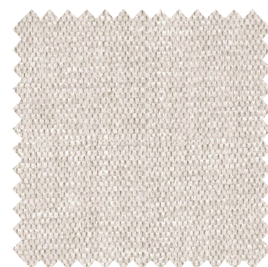
lava 165



lightgrey 60

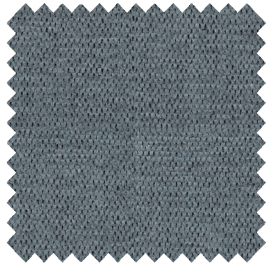


liver 10

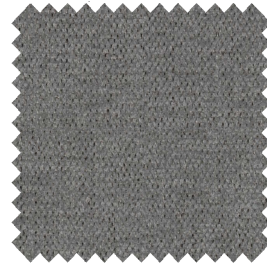


natural 01

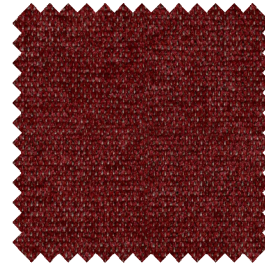
Please note: colours may vary according to your screen settings.



niagara 158



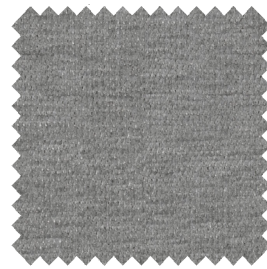
plumb 168



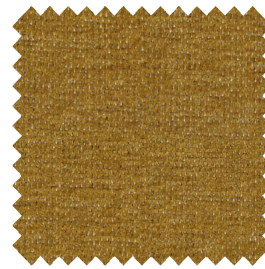
scarlet 141



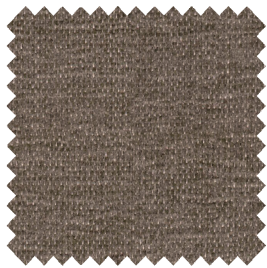
shitake 124



steel 149



sun 133



taupe 12

Please note: colours may vary according to your screen settings.

## Guard - Article passport

A nice luxurious high-quality article that meets every style.

Available from stock in a wide range of contemporary and commercial colours.

### Product characteristics

Productgroup	chenille flatweave
Applications	sofa's, beds, chairs with fitted and loose fitting upholstery
Composition faceside	100%PES
Composition backside	n/a
Coating	needle punch
Statistic code	58013300
Dyeing method	yarn dyed
Available colours	19
Packaging	boxes

### Durability specifications

Test	Test specification	Executed by laboratory:	Unit	Testresult		Norm RAL GZ 430/4:2019-01		Norm DIN EN 14 465:2006-09
				Dry	Wet	DGM	DGM+	
Abrasion resistance - yarn breakage	DIN EN ISO 12947-1:2007-04, DIN EN ISO 12947-2:2017-03	CTL	cycles	>100.000		min. 8.000	min. 16.000	C
Pilling	DIN EN ISO 12945-2:2000-11. 2000 cycles	CTL	grade	4		min. 3-4	min. 4	B
Colour fastness to light	DIN EN ISO 105-BO2:2014-11. Process 3, exposure level 5							
	light colours	CTL	grade	4		min. 4	min.5	C
	middle colours	CTL	grade	4		min. 4	min.5	C
Colour fastness to rubbing	DIN EN ISO 105-X12:2016-11							
	light colours	CTL	grade	4-5	4-5	dry: 4, wet: 3	dry: > 4, wet: 3-4	A/A
	middle colours	CTL	grade	4-5	5	dry: 4, wet: 3	dry: > 4, wet: 3-4	A/A
dark colours	CTL	grade	4-5	4-5	dry: 4, wet: 3	dry: > 4, wet: 3-4	A/A	
	Ignitability (cigarette test)	BS 5852 part 1 (1979) from The Furniture and Furnishing (Fire) (Safety) regulations: 1988 No. 1324. Schedule 4 part 1 Ignition source 0: cigarette	CTL	passed				

### Processing specifications

Minimum workable width in centimeters	± 138							
Roll length in meters	± 40							
Material weight in grams per linear meter	± 580							
Test	Test specification	Executed by laboratory:	Unit	Testresult		Norm RAL GZ 430/4:2019-01		Norm DIN EN 14 465:2006-09
				Warp	Weft	DGM	DGM+	
Tensile strength	DIN EN ISO 13934-1:2013-08	CTL	Newton	1.629	419	min. 350	min. 400	A/B
Tear growth resistance	DIN EN ISO 13937-3:2000-06	CTL	Newton	128,9	35,2	min. 25	min. 30	A/B
Resistance to seam slippage	DIN EN ISO 13936-2:2004-07. Load 180 N	CTL	mm	2,5	2,8	max. 5	max. 4	A/A
Delamination	DIN 53530:1981-02	CTL	Newton	n/a	n/a	n/a	n/a	n/a
Chemical substances	REACH	Centexbel		passed				
	Oeko-Tex, product class II	Centexbel		certified				

### Cleaning specifications

Test	Test specification	Executed by laboratory:	Unit	Testresult		Norm RAL GZ 430/4:2019-01		Norm DIN EN 14 465:2006-09
				Warp	Weft	DGM	DGM+	
Dimensional change for washing 30 degrees celcius / air drying	DIN EN ISO 5077:2008-04, DIN EN ISO 6330:2013-02, DIN EN ISO 3759:2011-08	CTL	%	-0,7	-0,6	n/a	n/a	A/A

- We recommend to wash the cover inside out and immediately place the cover back to the piece of furniture, slightly damp, after washing.



**Textaafoam**  
creativity in fabrics

Textaafoam b.v.  
La Défense 11 | 5026 SC Tilburg  
P.O. Box 12 | 5050 AA Goirle  
The Netherlands

T +31(0)13 534 5934  
F +31(0)13 534 7586  
E info@textaafoam.nl  
www.textaafoam.nl